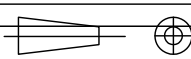
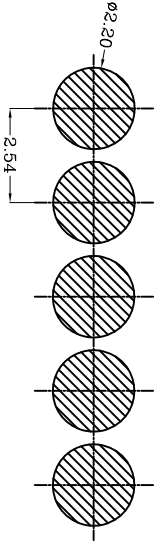
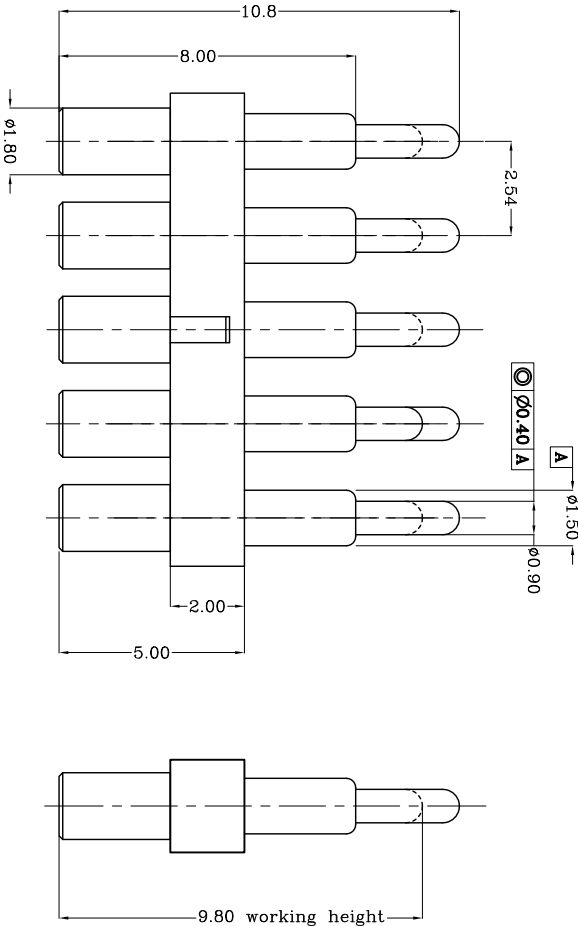
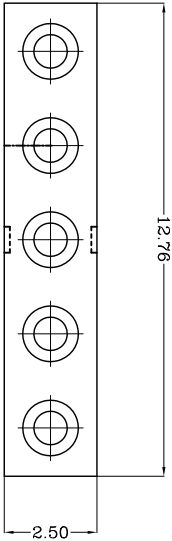


THIS INFORMATION IS CONFIDENTIAL AND IS DISCLOSED TO YOU ON CONDITION THAT NO FURTHER DISCLOSURE IS MADE BY YOU TO OTHER THAN TOP-LINK PERSONNEL WITHOUT WRITTEN AUTHORIZATION FROM TOP-LINK LTD.



DWN No.:  
C-110911



Recommended PCB Layout

# TOP-LINK

Notes:

- 1 Dimensions shall be interpreted per ASME Y14.5M.
- 2 Mechanical performance(See the table 1)  
<2.1>The force is the average of forces obtained when plunger goes downwards and upwards.
- 3 Electrical performance  
Resistance: 30mOhm Max.Current rating:2.0A
- 4 RoHS compliant.

Table 1 Mechanical performance

Table 1 Mechanical performance		
working height	9.8mm	120gf Min <2.1>
Durability	10000cycle	

Item	Part name	Q'ty/Ea'	Material	Finish
1	HSG	1	High temp.Plastic UL94 V-0 Color Black	_____
2	Body	5	Leaded Brass	Gold plating over Nickel plating
3	Plunger	5	Leaded Brass	Gold plating over Nickel plating
4	Spring	5	Stainless steel wire	_____
5				

Type	Unit	Weight	PART NUMBER
------	------	--------	-------------

Top-Link Electronics Ltd.	Customer drawing	mm	110911-5
---------------------------	------------------	----	----------

TOLERANCES UNLESS OTHER SPECIFIED	DWN:	APVD:	Top-Link Electronics Ltd.
-----------------------------------	------	-------	---------------------------

0.0 = ±0.15	CHK:	REL:	
-------------	------	------	--

0.00 = ±0.10	NAME	Customer drawing	
--------------	------	------------------	--

0.000= ±0.05	Scale	Size	DWG No.	Page	Rev.
--------------	-------	------	---------	------	------

ANGLE: ±1°	1:1	A4	C-110911	1/1	1
------------	-----	----	----------	-----	---

SURF. TEXTURE: REMOVE BURRS. BREAK SHARP EDGES R0.05 MAX.DO NOT SCALE PRINT.					
---	--	--	--	--	--

Rev.	Revision record.	Date.
------	------------------	-------

NEW	2012/09/14	
-----	------------	--

DIST		
------	--	--

DIST		
------	--	--

DIST		
------	--	--

4	3	2	1
---	---	---	---