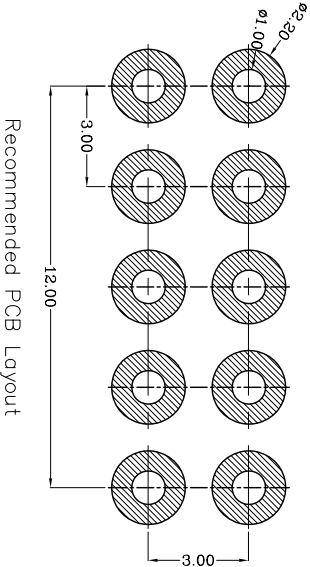
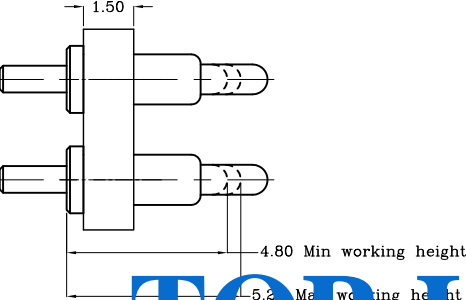
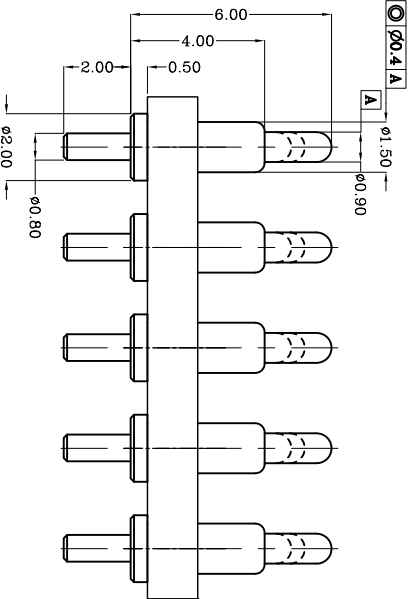
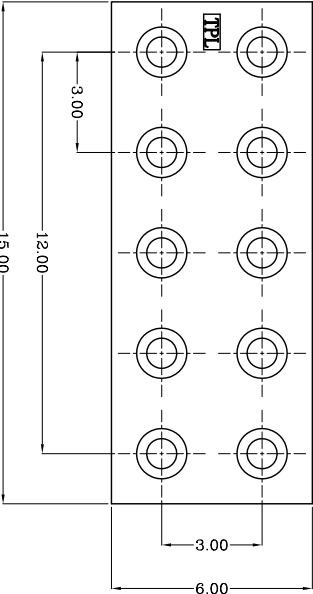


proposal



Recommended PCB Layout



TOP-LINK

Notes:

- 1 Dimensions shall be interpreted per ASME Y14.5M.
- 2 Mechanical performance(See the table 1)  
<2.1>The force is the average of forces obtained when plunger goes downwards and upwards.  
<2.2>Warning: Working height are not permitted to be less than Min working height.
- 3 Electrical performance  
Resistance: 30mOhm Max.  
Current rating: 2.0A
- 4 Packaging specification conforms to EIA 481
- 5 RoHS compliant.

Table 1 Mechanical performance

Max.working height	5.2mm	80gf min <2.1>
Min.working height	4.8mm	200gf max<2.1>
Durabiilty	10000cycle	

Item	Part name	Q'ty/Ed	Material	Finish
1	HSG	1	High temp.Plastic UL94 V-0 Color Black	_____
2	Body	10	Leaded Brass	Gold plating over Nickel plating
3	Plunger	10	Leaded Brass	Gold plating over Nickel plating
4	Spring	10	Stainless steel wire	_____
5				

Top-Link Electronics Ltd.		Type	Customer drawing	Unit	mm	Weight	PART NUMBER
TOLERANCES UNLESS OTHER SPECIFIED		DWN:	Gui zhiqiao	APVD:			1101010-10
0.0 = ±0.15		CHK:		REL:			Top-Link Electronics Ltd.
0.00 = ±0.10		Name					
0.000 = ±0.001		Pogo pin connector					
SURF. TEXTURE:		Scale	Size	DWG No.	Page	Rev.	
REMOVE BURRS.		1:1	A4	C-1101010	1/1	1	
BREAK SHARP EDGES							
R0.05 MAX. DO NOT SCALE PRINT.							