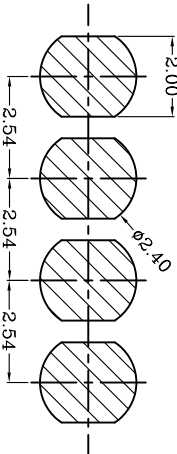
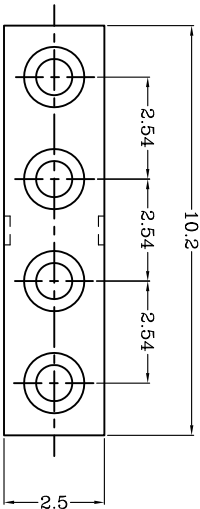
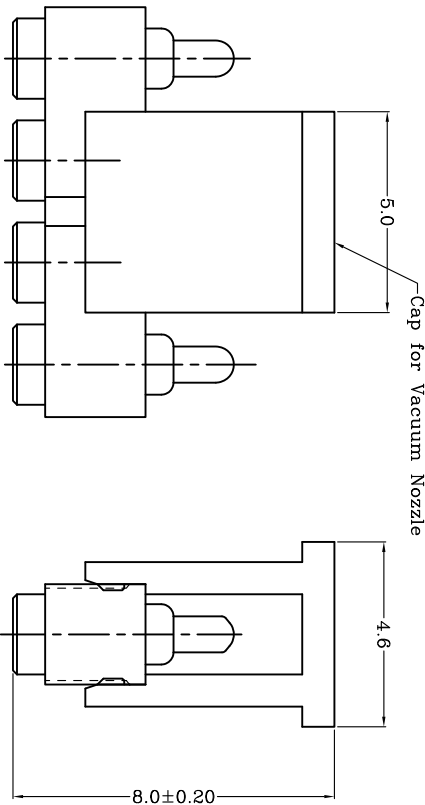
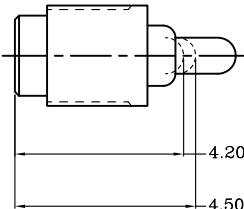
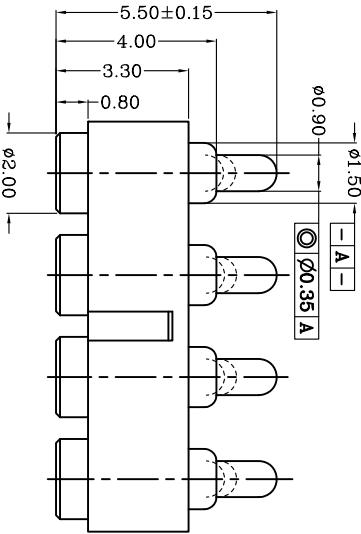


Proposal



Recommended PCB Layout



Notes:

- 1 Dimensions shall be interpreted per ASME Y14.5M.
- 2 Mechanical performance(See the table 1)
<2.1>The force is the average of forces obtained when plunger goes downwards and upwards.
- <2.2>Warning: Working height are not permitted to be less than Min working height.
- 3 Electrical performance
Resistance: 30mOhm Max.
Current rating: 2.0A
- 4 Packaging specification conforms to EIA 481
- 5 RoHS compliant.

TOP-LINK

Table 1 Mechanical performance

working height	4.5mm	120±30gf <2.1>
Durability	10000cycle	

Item	Part name	Q'ty/Ed	Material	Finish
1	HSG	1	High temp. Plastic UL94 V-0 Color Black	_____
2	Body	4	Leaded Brass	Gold plating over Nickel plating
3	Plunger	4	Leaded Brass	Gold plating over Nickel plating
4	Spring	4	Stainless steel wire	_____
5	CAP	1	High temp. Plastic UL94 V-0 Color Black	_____

Top-Link Electronics Ltd.		Type	Customer drawing	Unit	mm		Weight
TOLERANCES UNLESS OTHER SPECIFIED		DWN:	APVD:		<div>Top-Link Electronics</div> <div>Top-Link Electronics Ltd</div>		
0.0 = ±0.15		Cai wanlu					
0.00 = ±0.10		CHK:	REL:				
0.000 = ±0.001							
Angle: ±1°							
SURF. TEXTURE:							
REMOVE BURRS.							
BREAK SHARP EDGES							
R0.05 MAX DO NOT SCALE PRINT.							