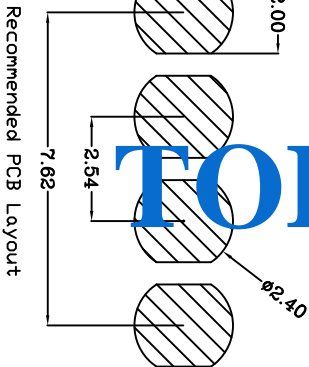
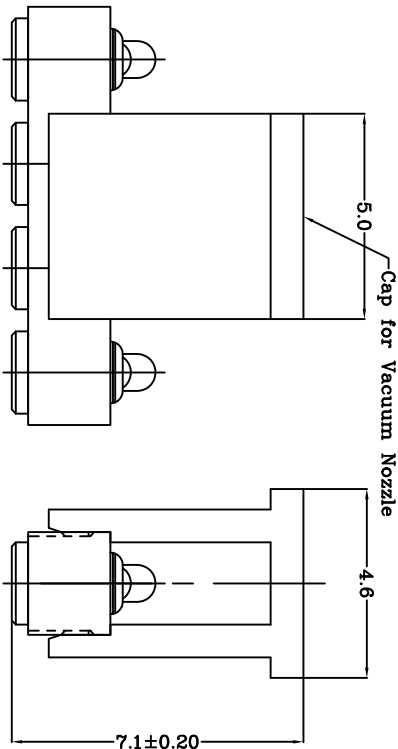
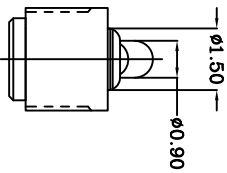
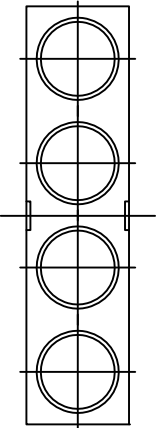
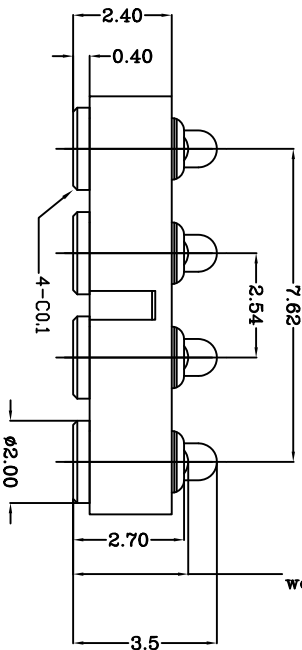
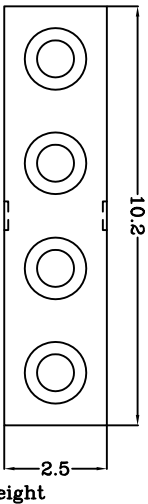


DWG NO.
C-100366

THIS INFORMATION IS CONFIDENTIAL AND IS DISCLOSED TO YOU ON CONDITION THAT NO FURTHER DISCLOSURE IS MADE BY YOU TO OTHER THAN TOP-LINK PERSONNEL WITHOUT WRITTEN AUTHORIZATION FROM TOP-LINK LTD.



Recommended PCB Layout

- Notes:
- 1 Material, Housing: PA 4,6 (30% Glass Filled)
Color: Black.
 - 2 Mechanical demands:
Plating Plunger: Min 0.4µm Au over 1.4µm Ni
Plating Body: Min 0.1µm Au over 1.4µm Ni.
Force: 75gf min. at 0.7mm stroke.
Resistance: Max. 30 mohm at working point.
Full stroke is 0.8mm

LDC	-
DIST	-

NEW		8/20/07/20
REVISION		
RECORD		
APVD		
DATE		

DIMENSIONS IN MM			
TOLERANCES UNLESS			
OTHER SPECIFIED			
0	= ±		
0.0	= ±0.15		
0.00	= ± 0.10		
0.000	= ±		
ANGLE: ±1°			
SURF TEXTURE: 32/			
REMOVE BURRS, BREAK			
SHARP EDGES R0.05 MAX			
DO NOT SCALE PRINT			
MATL	1	HT TR	FIN
DWN	Jim	APVD	Lansing
CHK	Andy	REL	Top-Link Electronics Ltd.
NAME	BATTERY	POGO CONNECTOR	4 POSITIONS
SCALE	1:1	A4	DWG NO. C-100366
100366-4			
PART NUMBER			
100366-4			
1 OF 1			

USED ON

-